

INSTINCT[®] | PRO

Manufactured and distributed by



Plumbing Tools 2024/25

Plumbing Tools

Section	Page No.
Plumbing Tools	
Monument Masters SweatBOX®	3
Soldering + Brazing	4
Monument Masters + Bending	5
new Copper Pipe Cutting + Deburring	6
Plastic Pipe Cutting	8
Sawing + Cutting	9
Radiators	10
Taps + Stopcocks	11
Compression Fittings + Immersion Heaters	12
Boilers, Flues + System Testing	13
Wrenches + Spanners	14
Miscellaneous	15

Our frequently ordered Consumable products...




Best Seller

Instinct Pro 15mm Pipe Bender
Page 5




Best Seller


15mm Autocut® Copper Pipe Cutter
Page 6



15mm Drain Down Hose
Page 13



200mm (8") Wide Jaw Adjustable Wrench
38mm Cap
Page 14



Omat® 250mm (10") Soldering + Brazing Pad
Page 4

Guarantees

1 Year
on Plumbing Tools

Plumbing Tools



Take a closer look at the
SweatBOX® features video



Monument Masters SweatBOX®

The SweatBOX® is the ultimate plumbers soldering tray.

The SweatBOX® features a flame retardant engineering grade plastic with a patented clamp for holding different sizing of copper pipe up to 22mm or 3/4".

There is a silicone strip edge to the Sweatbox ensuring heat is not conducted from the hot copper pipe to the plastic of the Sweatbox or the clients property. Adhesive rubber feet are included, helping to prevent scratches to surfaces. The sealed compartments are ideal for holding a gas bottle, separated blowtorch and all the essentials needed for soldering or sweating a joint. There's even a compartment for flux brushes.

Finish – Yellow

Dimensions – 435(h) x 330(w) x 240(d) mm

MAST20201L

Plumbing Tools

Guarantees

1 Year
on Plumbing Tools

Soldering + Brazing

Omat® Soldering + Brazing Pad

Quantity – 1

Dimensions –

240(h) x 240(w) x 5(d) mm (INST2361)

155(h) x 155(w) x 5(d) mm (INST2363)

250mm (10") Soldering + Brazing Pad

The INST2361 OMAT® is a patented, slotted protection mat for soldering pipes and tubes to protect walls, carpets and other flammable material. The OMAT® slot has an overlap at the back which enables the protective mat to go either side of the tube or pipe being soldered so as to protect the surrounding area from burning or scorching as well as reducing the risk of fire. It is particularly useful under kitchen units and on pipes perpendicular to the wall where the use of a non-slotted mat would not easily cover the area. The OMAT® is designed for use on pipes and tubes 15 to 22mm diameter.

150mm (6") Soldering + Brazing Pad

A patented, slotted protection mat or pad for soldering and brazing 15mm and 22mm copper tube and pipe. The size of the mat is 150mm x 150mm (6" x 6") for use in really awkward places where the larger sizes of Omat® would obstruct easy access of the soldering torch. It is designed to protect walls, cables, carpets and other flammable material surrounding a pipe being soldered/brazed. The slot in the Monument 2363L Micro Omat® has an overlap at the back which enables the protective mat to go either side of the tube or pipe being soldered/brazed so as to protect the surrounding area from burning or scorching, as well as reducing the risk of fire. It is particularly useful under kitchen units and on pipes perpendicular to the wall where the use of a non-slotted mat would provide inadequate cover of the area to prevent damage.

INST2361 Omat® 250mm (10") Soldering + Brazing Pad

INST2363 Omat® 150mm (6") Soldering + Brazing Pad


300mm (12") Soldering + Brazing Pad

Quantity – 1 of Each

Dimensions – 310(h) x 310(w) x 10(d) mm

INST2350


Flux Brushes

Quantity – Pack of 5

Dimensions – 200(h) x 10(w) x 10(d) mm

INST3015-1


Flux Brushes

Quantity – Pack of 10

Dimensions – 200(h) x 10(w) x 10(d) mm

INST3015-10

Guarantees

1 Year
on Plumbing Tools

Plumbing Tools

Monument Masters + Bending

15mm Pipe Bender (With INST1715 15mm Copper Pipe Cutter)

The Pipe Bender is a single sized pipe bender for 15mm copper pipe (0.7mm wall).

Quantity – 1
Dimensions – 470(h) x 190(w) x 65(d) mm

Features + Benefits

Less fiddly – with the integrated hook and nylon guide, the integrated hook stop won't flop from side to side and the guide(s) won't fall out

Lighter in the hand than a combi – the pipe bender weighs 1.9kg

Less cumbersome – you are only using a bender for the size of pipe being bent

Better sight lines – as the bend is in the same plane as the arms of the bender it is easier to line up by eye

Smaller than a combi – the pipe bender has an arm length of 40cm approx. (a combi arm length is 65cm). It even fits in a tool bag

Best Seller



INST1215AV Instinct Pro
15mm Pipe Bender

1322EXTENDED Monument Masters XXII
Extended 22mm Bender



15mm + 22mm Copper Pipe Bender (Guides)

Quantity – 1
Dimensions – 700(h) x 135(w) x 155(d) mm

The INST2600 15mm and 22mm Copper Pipe Bender is designed to professionally bend BSEN1057 15mm and 22mm copper pipe and 15mm stainless steel tube. The aluminium formers are marked with bending angles of 30, 45 and 90 degree offsets allowing for accurate bending. The Instinct Pro Pipe Bender is supplied with replaceable 15mm and 22mm aluminium bending guides.

INST2600



15mm Copper Pipe Bender Guide

Quantity – 1
Dimensions – 165(h) x 20(w) x 15(d) mm

INST2601



22mm Copper Pipe Bender Guide

Quantity – 1
Dimensions – 230(h) x 22(w) x 25(d) mm

INST2603

Plumbing Tools

Guarantees

1 Year
on Plumbing Tools

Copper Pipe Cutting + Deburring



10mm Copper Pipe Cutter

Quantity – 1
Dimensions – 45(h) x 45(w) x 30(d) mm

INST1810N



15mm Autocut® Copper Pipe Cutter

Quantity – 1
Dimensions – 50(h) x 50(w) x 30(d) mm

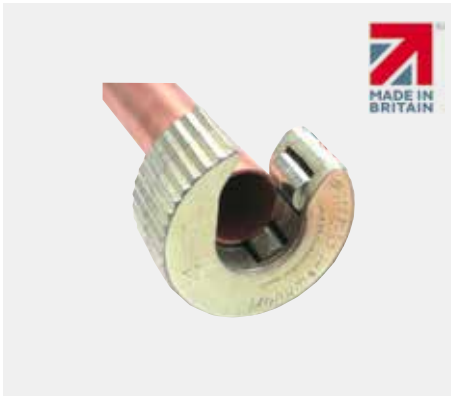
INST1715



22mm Autocut® Copper Pipe Cutter

Quantity – 1
Dimensions – 58(h) x 58(w) x 30(d) mm

INST1722



28mm Autocut® Copper Pipe Cutter

Quantity – 1
Dimensions – 65(h) x 65(w) x 30(d) mm

INST1728



Spare Wheels (Autocut® + Pipeslice®)

Quantity – Pack of 2
Dimensions – 35(h) x 40(w) x 40(d) mm

INST0269



15mm + 22mm Autocut® Copper Pipe Cutter

Quantity – 1
Dimensions – 55(h) x 55(w) x 40(d) mm

INST17151722

15mm + 22mm Autocut® Copper Pipe Cutters (Restricted Access Handles)

Quantity – Pack of 2
Dimensions – 170(h) x 70(w) x 30(d) mm

The Restricted Access Handles are designed as an aid for rotating the INST1715 + INST1722 in confined spaces where the users' hands will not fit. Made from bright zinc plated steel the handles engage in the outer casing of the INST1715 + INST1722. They are designed to be easily slipped on and off of the cutter body from either side of the pipe cutter, even when it is engaged on the pipe to be cut.



INST1739

Guarantees

1 Year
on Plumbing Tools

Plumbing Tools

Copper Pipe Cutting + Deburring



Size 3mm-22mm Copper Pipe Cutter

Quantity – 1
Dimensions – 45(h) x 70(w) x 30(d) mm

INST0264



Size 4mm-28mm Copper Pipe Cutter

Quantity – 1
Dimensions – 185(h) x 55(w) x 30(d) mm

INST0265



Size2A 12mm-43mm Copper Pipe Cutter

Quantity – 1
Dimensions – 220(h) x 65(w) x 40(d) mm

INST0266



35mm Internal + External Pipe Deburrer

Quantity – 1
Dimensions – 75(h) x 45(w) x 45(d) mm

INST0365



12-54mm Inside/Outside Deburrer

Quantity – 1
Dimensions – 85(h) x 65(w) x 65(d) mm

INST0374



**Spare Wheel
(Size 0-1-2A Copper Pipe Cutters)**

Quantity – Pack of 2
Dimensions – 40(h) x 55(w) x 55(d) mm

INST0273



**15mm + 22mm Copper Pipe
+ Fitting Brush**

Quantity – 1
Dimensions – 195(h) x 45(w) x 30(d) mm

INST3033



Deburring Tool

Quantity – 1
Dimensions – 143(h) x 15(w) x 10(d) mm

INST3020



Cleaning Abrasive Strips

Quantity –
10 Pack (INST3024), Twinpack (INST3024-6)
Dimensions –
255(h) x 40(w) x 10(d) mm (INST3024)
140(h) x 60(w) x 40(d) mm (INST3024-6)

INST3024

Cleaning Abrasive Strips

INST3024-6

3m Rolls of Cleaning Abrasive Strips

Plumbing Tools

Guarantees

1 Year on Plumbing Tools

Plastic Pipe Cutting



6-28mm Plastic Pipe Cutter
 Quantity – 1
 Dimensions – 195(h) x 70(w) x 20(d) mm

INST2644



Burrfect Square Plastic Waste Pipe Deburrer
 Quantity – 1
 Dimensions – 80(h) x 80(w) x 3(d) mm

INST2116



20-42mm Plastic Pipe Cutter
 Quantity – 1
 Dimensions – 220(h) x 125(w) x 25(d) mm

INST2645



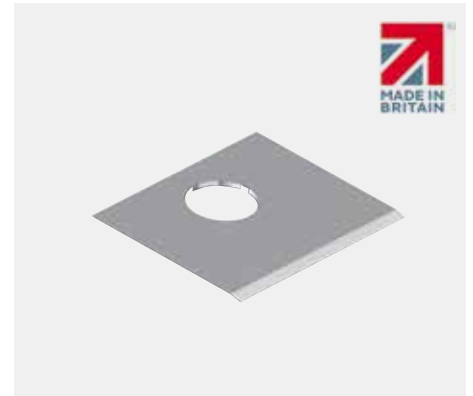
15mm + 22mm Autocut® (Plastic Pipe Cutter)
 Quantity – 1
 Dimensions – 75(h) x 75(w) x 40(d) mm (INST0115)
 70(h) x 70(w) x 40(d) mm (INST0122)

INST0115	15mm
INST0122	22mm



1 1/4" + 1 1/2" Autocut® (Plastic Waste Pipe Cutter)
 Quantity – 1
 Dimensions – 70(h) x 70(w) x 50(d) mm (INST1114)
 70(h) x 70(w) x 55(d) mm (INST1112)

INST1114	1 1/4"
INST1112	1 1/2"



Spare Blades for Autocut® (Plastic Pipe Cutter)
 Quantity – Pack of 5
 Dimensions – 50(h) x 50(w) x 5(d) mm
 INST0100



Take a closer look at the Autocuts tool in action!



Plumbing Tools

Guarantees

1 Year on Plumbing Tools

Sawing + Cutting

300mm (12") Hacksaw

Quantity – 1
Dimensions – 440(h) x 140(w) x 20(d) mm

The INST1921D 300mm (12") Hacksaw has a die-cast aluminium handle and square section tubular steel frame, which combine to give a lightweight hacksaw with great tensile strength. Adjusts to give 45° angle for flush cutting.



INST1921D



Junior Hacksaw

Quantity – 1
Dimensions – 245(h) x 75(w) x 10(d) mm

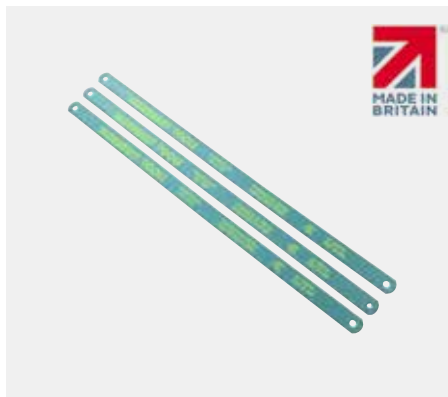
INST2000



Folding Knife

Quantity – 1
Dimensions – 75(h) x 55(w) x 10(d) mm

INST1023



300mm (12") Hacksaw Blades

Quantity – Pack of 3
Dimensions – 310(h) x 40(w) x 3(d) mm

INST1923



Spare Blade (Junior Hacksaw)

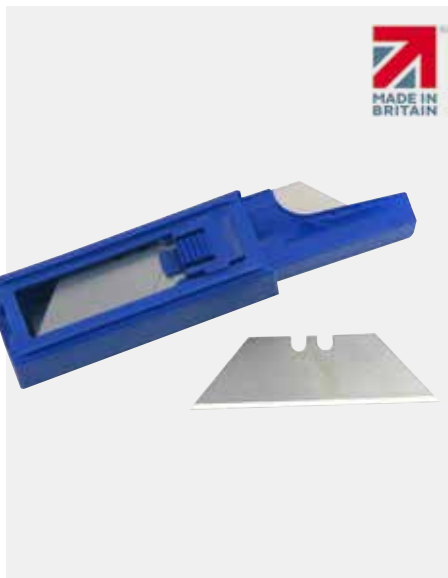
Quantity – Pack of 10
Dimensions – 160(h) x 35(w) x 10(d) mm

INST1120

Standard Trapezoidal Knife Blades

Quantity – Pack of 10
Dimensions – 65(h) x 65(w) x 20(d) mm

The INST1024 Pack of Ten Standard Trapezoidal Knife Blades. Trimming knife blades are suitable for the trade trimming knife. Supplied in a dispenser.



INST1024



Six Flat Bits

Quantity – Pack of 6
Dimensions – 155(h) x 50(w) x 20(d) mm

INST1950

Plumbing Tools

Guarantees

1 Year
on Plumbing Tools

Radiators



Universal Radiator Valve Spanner

Quantity – 1
Dimensions – 110(h) x 40(w) x 20(d) mm

INST2052



Radiator Step Wrench + Ratchet

Quantity – 1
Dimensions – 275(h) x 45(w) x 30(d) mm

INST2048



1/2, 3/4 + 1" Lockshield Radiator Valve Key

Quantity – 1
Dimensions – 85(h) x 85(w) x 20(d) mm

INST2056



Four-Way Multipurpose Key

Quantity – 1
Dimensions – 75(h) x 75(w) x 20(d) mm

INST2059



TRV Tail Driver

Quantity – 1
Dimensions – 60(h) x 30(w) x 30(d) mm

INST2166



Radiator Bleed Keys

Quantity – Pack of 3
Dimensions – 35(h) x 68(w) x 5(d) mm

INST2058-1



Gas Meter + Radiator Bleed Key

Quantity – 1
Dimensions – 90(h) x 30(w) x 20(d) mm

INST2050



3-in-1 and 4-in-1 Radiator Valve Spanners

Quantity –
Pack of 1 (INST2053 + INST2054)
Pack of 2 (INST2055)
Dimensions – 135(h) x 60(w) x 20(d) mm

INST2053 Radiator Valve Spanner 10mm Square + 5mm Balancing Tool

INST2054 Radiator Valve Spanner 12mm Hex., Air Release + 4mm Balancing Tool

INST2055 Twinpack

Guarantees

1 Year
on Plumbing Tools

Plumbing Tools

Taps + Stopcocks



Contractors Telescopic Back Nut Wrench

Quantity – 1
Dimensions – 280(h) x 150(w) x 30(d) mm

INST0781



Domestic Mains Water Mini Stopcock Key

Quantity – 1
Dimensions – 220(h) x 45(w) x 40(d) mm

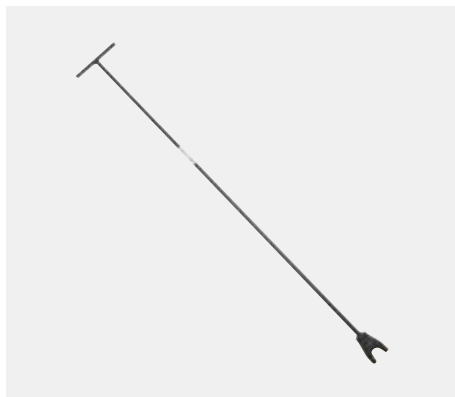
INST0331



Parallel Bush Tap Reseater (Three Cutters)

Quantity – 1
Dimensions – 135(h) x 40(w) x 50(d) mm

INST0450



1050mm (42") Mains Water Tapered 1/2" + 3/4" Stopcock Key

Quantity – 1
Dimensions – 1060(h) x 160(w) x 20(d) mm

INST0339



Pro Adjustable Basin Wrench (Two Jaws)

Quantity – 1
Dimensions – 255(h) x 90(w) x 80(d) mm

INST0345



27 x 32mm Tap Back Nut Box Spanner

Quantity – 1
Dimensions – 157(h) x 40(w) x 40(d) mm

INST0319



45 x 50mm Waste Nut Box Spanner

Quantity – 1
Dimensions – 200(h) x 60(w) x 50(d) mm

INST0308



8mm-13mm Monobloc Box Spanners

Quantity – Set of 3
Dimensions – 185(h) x 45(w) x 20(d) mm

INST3240



Malleable Cast Basin Back Nut Wrench

Quantity – 1
Dimensions – 260(h) x 27(w) x 45(d) mm

INST0327

Plumbing Tools

Guarantees

1 Year on Plumbing Tools

Compression Fittings + Immersion Heaters



Compression Fitting Nut Spanners

Quantity – Pack of 2
Dimensions – 160(h) x 55(w) x 10(d) mm

INST2042



Box Ring Immersion Heater Spanner

Quantity – 1
Dimensions – 295(h) x 50(w) x 30(d) mm

INST0358



Pro Cast Immersion Heater Spanner 86mm A/F

Quantity – 1
Dimensions – 250(h) x 110(w) x 50(d) mm

INST0361



Additionally there is a power tool drive to make this indispensable tool even more useful!

Just remember to have your drill set to drive not reverse.

15mm + 22mm Compression Fitting Olive Puller

Quantity – 1
Dimensions – 150(h) x 60(w) x 40(d) mm

The INST2036 works by engaging the tool in the end of the copper pipe and then winding the appropriate bush - 15mm and 22mm included - counter clockwise until it stops at the olive to be removed. The threaded bush is then screwed into the compression nut which is held captive on the pipe on the other side of the olive. Then by rotating the handle clockwise the compression fitting nut is drawn up the pipe and pulls the olive off the pipe without damaging it.

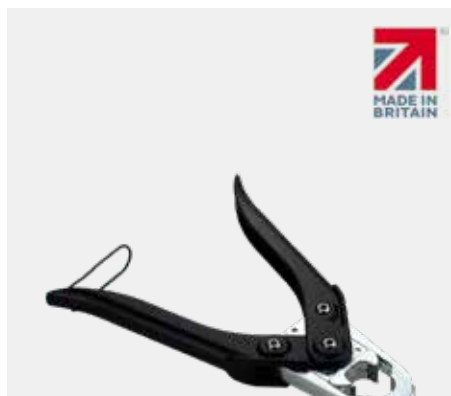
INST2036



22mm Compression Fitting Olive Cutter

Quantity – 1
Dimensions – 192(h) x 55(w) x 25(d) mm

INST2031



15mm Compression Fitting Olive Cutter

Quantity – 1
Dimensions – 195(h) x 55(w) x 20(d) mm

The INST2030 15mm and INST2031 22mm are designed to remove an olive from copper pipe without damage to the pipe and without producing swarf. The latest version includes replaceable, interchangeable and reversible tungsten carbide blades.

Not for use on steel olives.

INST2030

Plumbing Tools

Guarantees

1 Year
on Plumbing Tools

Boilers, Flues + System Testing

30mb Gas Test Gauge

Quantity – 1
Dimensions – 550(h) x 75(w) x 30(d) mm

The INST0257 30mb Gas Test Gauge is Made in Britain and is made from tough plastic. It is used both for testing pipework installations with air for leaks before the introduction of gas and for checking and setting correct gas pressures on domestic and commercial appliances. Extruded cover slides off and may be clipped over the base for standing the tool vertically during use. Hanging tab permits vertical hanging from suitable protrusions. Marked in millibars, the scale adjusts for zeroing the water level.



INST0257



Mains Water Pressure Test Gauge 11 Bar x 3/4" BSP

Quantity – 1
Dimensions – 285(h) x 55(w) x 40(d) mm

INST1510

Dry Test Kit 15mm x 4 Bar

Quantity – 1
Dimensions – 130(h) x 55(w) x 30(d) mm

The INST1512 Pipe Dry Testing Kit is ideal for dry testing pipe work during and after installation. It has an easy to read triple scale bar, psi and kPa and is suitable for water, air, gas and petroleum oil pipes up to 4 bar, and for testing combi systems. Can be left on test, while flooring is laid to reveal any nail damage also test hot and cold supplies separately to ensure pipes are not crossed. Fitted with a Schrader Valve and 15 mm push fit fitting for quick and easy assembly and has a rubber boot for added protection.



INST1512



Flue Brushes

Quantity – Pack of 3
Dimensions – 500(h) x 120(w) x 55(d) mm

INST3014



15mm + 22mm Pipe End Plugs

Quantity – 1 of Each
Dimensions – 65(h) x 65(w) x 20(d) mm

INST1368



15m Drain Down Hose

Quantity – 1
Dimensions – 280(h) x 240(w) x 175(d) mm

INST2404



2m Spare Gas Test Gauge Hose (LPG)

Quantity – 1
Dimensions – 260(h) x 40(w) x 30(d) mm

INST1731

Plumbing Tools

Guarantees

1 Year
on Plumbing Tools

Wrenches + Spanners



150mm (6") Wide Jaw Adjustable Wrench 34mm Cap

Quantity – 1
Dimensions – 165(h) x 65(w) x 15(d) mm

INST3140



200mm (8") Wide Jaw Adjustable Wrench 38mm Cap

Quantity – 1
Dimensions – 210(h) x 70(w) x 10(d) mm

INST3141



250mm (10") Wide Jaw Adjustable Wrench 50mm Cap

Quantity – 1
Dimensions – 290(h) x 95(w) x 20(d) mm

INST3143



Mongoose 175mm (7") One Handed Slip Joint Pliers

Quantity – 1
Dimensions – 180(h) x 45(w) x 20(d) mm

INST2071



Mongoose 250mm (10") One Handed Slip Joint Pliers

Quantity – 1
Dimensions – 245(h) x 50(w) x 20(d) mm

INST2072



Mongoose 300mm (12") One Handed Slip Joint Pliers

Quantity – 1
Dimensions – 300(h) x 55(w) x 20(d) mm

INST2073



150mm (6") Thin Jaw Adjustable Wrench

Quantity – 1
Dimensions – 165(h) x 65(w) x 20(d) mm

INST4140



200mm (8") Thin Jaw Adjustable Wrench

Quantity – 1
Dimensions – 210(h) x 70(w) x 20(d) mm

INST4141



6" + 8" Thin Jaw Adjustable Wrenches

Quantity – 1
Dimensions – 210(h) x 70(w) x 40(d) mm

INST41499

Guarantees

1 Year on Plumbing Tools

Plumbing Tools

Miscellaneous



Tape Measure (Backing Card)

Quantity – 1
Dimensions – 150(h) x 85(w) x 35(d) mm

INST196155	5m
INST196258	8m



Screwdriver

Quantity – 1
Dimensions – 410(h) x 30(w) x 40(d) mm

INST1518	450mm (18") Flat Head Screwdriver
INST1517	300mm (12") No.2 Phillips Screwdriver



20ft Drain Cleaner

Quantity – 1
Dimensions – 285(h) x 285(w) x 185(d) mm

INST3310



D-End Manhole Lifting Keys

Quantity – 1 x Set of Keys
Dimensions – 105(h) x 125(w) x 30(d) mm

INST1010



Handy Plunger

Quantity – 1
Dimensions – 320(h) x 125(w) x 90(d) mm

INST1460



Toilet Plunger

Quantity – 1
Dimensions – 620(h) x 125(w) x 130(d) mm

INSTM1600

INSTINCT²

The Ideal Instinct² Combi Boiler

Available in outputs of 24, 30 and 35 kW the Instinct² provides a cost effective heating solution for a range of domestic installations. Designed for a compact space, quick and easy to install and with a low lift weight, the Instinct² combi boiler is the perfect fit.

www.instinctproducts.co.uk

Boiler Plus Compliant



ideal HEATING

Easy To Install

INSTINCT[®] | PRO



Scan here to visit
instinctproducts.co.uk



@instinct.products



@instinctproducts



@instinctproducts