

**||||>> HENRAD**

STELRAD RADIATOR GROUP

Any room.  
Any home.  
Any lifestyle.



# Contents

03/05	Arno Towel Rail Range	
04	- Arno Single	
04	- Arno Double	
05/06	Verona Towel Rail	
07/12	Verona Range	<b>IMPROVED DESIGN</b>
08	- Verona Single Plane	<b>RANGE EXTENSION</b>
08	- Verona Double Plane	<b>RANGE EXTENSION</b>
09/10	- Verona Vertical	
11	- Verona Lo-Line	<b>RANGE EXTENSION</b>
12	- Verona Slimline	
13/14	Column Range	
14	- Column 2	<b>RANGE EXTENSION</b>
14	- Column 2 Vertical	
14	- Column 3	<b>RANGE EXTENSION</b>
14	- Column 4	
15/16	- Column Concept	
17/18	Everest Line	
19/20	Everest Line Concept	
21/22	Plan	
23/24	Plan Concept	
25/26	Plan Vertical	<b>NEW</b>
27/28	Alto Line	<b>RANGE EXTENSION</b>
29/30	Compact	
31/32	Compact K3	<b>NEW</b>
33/34	LST Standard	
35/36	Colour Range	
37	Accessories	
38	Glossary	

# Designer warmth with contemporary flair

Radiators play such an important role in today's lifestyles. They are the focal point of many rooms, so they should reflect your aspirational needs for good looks as well as a comfortable environment. Henrad is the radiator range to satisfy all your expectations.

As part of the Stelrad Radiator Group, Henrad has a highly respected pedigree. Within the current portfolio, the Compact steel panel range is unsurpassed, offering over 140 variants to meet your specific needs, now including the efficient Compact K3. And, representing the demand for leading edge design, the Verona, Everest Line, Plan, Alto Line and Column styles are already well established and the Plan Vertical is now being introduced.

We have some stunning products, including the Arno Single, Arno Double and Verona Towel Rails to give you even more choice for your home. Henrad's LST Standard is a low surface temperature radiator for safety conscious environments. There are also plenty of variants that now include the option of stylish modern colourways to further enhance your favourite rooms.

**Henrad – the radiator for choice, quality and guaranteed value.**

Arno Single Towel Rail



Arno Double Towel Rail



Verona Towel Rail



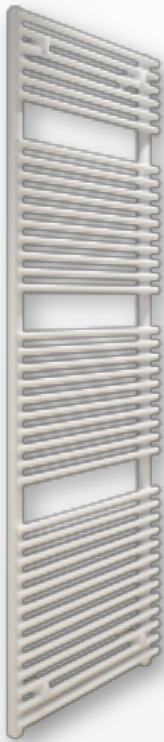
# Arno Towel Rail Range





Elegant tube on tube design consisting of a tight array of slim tubes makes the Arno range an easy choice for any bathroom or kitchen.

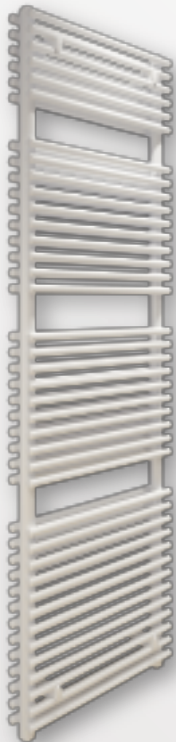
Prices exclude VAT



## Arno Single

Height mm	Length mm	Henrad Code	UIN Colour*	Heat emissions		Henrad Price
				Watts	Btu/hr	
792	450	417902450	417902451	408	1392	£238.28
	500	417902500	417902501	452	1542	£267.74
	600	417902600	417902601	540	1842	£297.19
	750	417902750	417902751	672	2293	£326.63
1088	450	411002450	411002451	560	1911	£253.00
	500	411002500	411002501	615	2098	£282.46
	600	411002600	411002601	725	2474	£311.92
	750	411002750	411002751	890	3037	£341.36
1680	450	411602450	411602451	849	2897	£341.36
	500	411602500	411602501	929	3170	£372.15
	600	411602600	411602601	1090	3719	£401.60
	750	411602750	411602751	1331	4541	£431.06
1976	450	411902450	411902451	985	3361	£372.15
	500	411902500	411902501	1080	3685	£401.60
	600	411902600	411902601	1271	4337	£431.06
	750	411902750	411902751	1557	5312	£460.50

Btu/hr @  $\Delta t50^{\circ}\text{C}$



## Arno Double

Height mm	Length mm	Henrad Code	UIN Colour*	Heat emissions		Henrad Price
				Watts	Btu/hr	
792	450	427902450	427902451	593	2023	£311.92
	500	427902500	427902501	657	2242	£341.36
	600	427902600	427902601	787	2685	£372.15
	750	427902750	427902751	982	3351	£401.60
1088	450	421002450	421002451	775	2644	£341.36
	500	421002500	421002501	860	2934	£372.15
	600	421002600	421002601	1030	3514	£401.60
	750	421002750	421002751	1287	4391	£431.06
1680	450	421602450	421602451	1200	4094	£445.79
	500	421602500	421602501	1327	4528	£475.23
	600	421602600	421602601	1583	5401	£504.68
	750	421602750	421602751	1967	6711	£535.47
1976	450	421902450	421902451	1409	4808	£489.95
	500	421902500	421902501	1556	5309	£520.74
	600	421902600	421902601	1852	6319	£550.19
	750	421902750	421902751	2296	7834	£579.66

Btu/hr @  $\Delta t50^{\circ}\text{C}$

Working pressure:  
Tested to withstand 6.0 bar



For technical and installation information visit our website  
[www.henrad.co.uk/downloads](http://www.henrad.co.uk/downloads)



Centre Tap TRV is now available, see page 37  
Colour options available, see page 35

Tube Dimensions



\*Price of coloured radiators are available on request.

When a coloured radiator has been ordered it cannot be cancelled or returned. All coloured radiators have up to an 8 week lead time from date of order.

# Verona Towel Rail



The Verona Towel Rail offers a stunning alternative to tubular towel rails. Providing a contemporary solution to a wide range of building applications.

Prices  
exclude  
VAT



Colour illustrated Pastel orange RAL A2003

## Verona Towel Rail

Height mm	Length mm	Henrad Code	UIN Colour*	Heat emissions		Henrad Price
				Watts	Btu/hr	
<b>796</b>	450	437902450	437902451	369	1259	£327.98
	600	437902600	437902601	483	1648	£349.40
<b>1121</b>	450	431102450	431102451	503	1716	£388.21
	600	431102600	431102601	658	2245	£409.64
<b>1446</b>	450	431402450	431402451	639	2180	£461.85
	600	431402600	431402601	834	2846	£483.26
<b>1706</b>	450	431702450	431702451	749	2556	£622.48
	600	431702600	431702601	975	3327	£643.90

Btu/hr @  $\Delta t 50^{\circ}\text{C}$

Colour options available, see page 35

\*Price of coloured radiators are available on request.  
When a coloured radiator has been ordered it cannot be cancelled or returned.  
All coloured radiators have up to an 8 week lead time from date of order.

### Tube Dimensions



Working pressure:  
Tested to withstand 4.0 bar



For technical and installation  
information visit our website  
[www.henrad.co.uk/downloads](http://www.henrad.co.uk/downloads)



Centre Tap TRV is now available, see page 37



# Verona Range



Verona Double Plane



Offering visual appeal combined with advanced technology, the Verona provides a contemporary solution for a huge range of applications

The single and double plane radiators allow you to choose the right output for any situation.  
**Improved design for 2019.**

Prices  
exclude  
VAT

Verona Single Plane



## Verona Single Plane

Height mm	Length mm	Tap Centres	Henrad Code	Heat emissions Watts	Btu/hr	Henrad Price
440	800	800	248349	611	2085	£199.78
	1000	1000	248351	764	2607	£217.26
	1200	1200	248353	917	3129	£239.85
592	500	500	248363	501	1709	£184.34
	600	600	248364	601	2051	£197.05
	700	700	248365	701	2392	£209.76
	800	800	248366	802	2737	£222.48
	1000	1000	248368	1002	3419	£247.91
	1200	1200	248370	1202	4101	£273.33
	1400	1400	248371	1403	4787	£298.75
	1600	1600	248372	1603	5470	£324.18
	1800	1800	248373	1804	6156	£349.61
2000	2000	248374	2004	6838	£375.04	

Btu/hr @  $\Delta t 50^{\circ}\text{C}$

Verona Double Plane



## Verona Double Plane

Height mm	Length mm	Tap Centres	Henrad Code	Heat emissions Watts	Btu/hr	Henrad Price
440	800	800	248400	1077	3675	£405.26
	1000	1000	248402	1346	4593	£440.08
	1200	1200	248404	1615	5510	£485.27
592	600	600	248415	1018	3474	£400.46
	700	700	248416	1188	4054	£425.88
	800	800	248417	1358	4634	£451.31
	900	900	248418	1527	5210	£476.74
	1000	1000	248419	1697	5790	£502.16
	1200	1200	248421	2036	6947	£553.01
	1400	1400	248422	2376	8107	£603.87
	1600	1600	248423	2715	9264	£654.72
	1800	1800	248424	3055	10424	£705.57
2000	2000	248425	3394	11581	£756.42	

Btu/hr @  $\Delta t 50^{\circ}\text{C}$

Working pressure:  
Tested to withstand 4.0 bar



### Floor mounting bracket information

Length mm	Feet Required
400 - 1500	2
1600 - 3500	3

Optional extra to have no lugs. This needs specifying at the time of ordering for floor standing only.

For technical and installation information visit our website  
[www.henrad.co.uk/downloads](http://www.henrad.co.uk/downloads)



# Verona Vertical



Verona Vertical

With a choice of five types and a variety of sizes and outputs, the Verona allows extensive flexibility of siting, whilst breaking new barriers in heating efficiency.

Make a statement with Verona Vertical! Combining modern style and appeal that will fit in any new or existing space. **Improved design for 2019.**

Prices  
exclude  
VAT

Verona Vertical



## Verona Vertical

Height mm	Length mm	Tap Centres	Henrad Code	Heat emissions Watts	Btu/hr	Henrad Price
1800	444	444	248340	852	2907	£235.19
	592	592	248341	1136	3876	£298.75
	740	740	248342	1420	4845	£362.32
2000	444	444	248343	942	3214	£298.75
	592	592	248344	1256	4286	£362.32
	740	740	248345	1570	5357	£425.88

Btu/hr @  $\Delta t50^{\circ}\text{C}$

Working pressure:  
Tested to withstand 4.0 bar



For technical and installation  
information visit our website  
[www.henrad.co.uk/downloads](http://www.henrad.co.uk/downloads)



### Floor mounting bracket information

Length mm	Feet Required
400 - 1500	2

Optional extra to have no lugs. This needs specifying at the time of ordering for floor standing only.

# Verona Lo-Line

The modern Verona Lo-Line radiator has been specifically designed to be sited under window locations. **Improved design for 2019.**



## Verona Lo-Line

Height mm	Length mm	Tap Centres	Henrad Code	Heat emissions		Henrad Price
				Watts	Btu/hr	
148	800	800	248308	541	1846	£216.12
	1400	1400	248311	946	3228	£286.05
	2000	2000	248314	1352	4613	£362.32
	2200	2200	248315	1487	5074	£387.74
296	800	800	248316	898	3064	£367.28
	1400	1400	248319	1571	5360	£459.10
	2000	2000	248322	2244	7657	£580.40
	2200	2200	248323	2453	8370	£591.15

Btu/hr @  $\Delta t50^{\circ}\text{C}$

### Floor mounting bracket information

Length mm	Feet Required
400 - 1500	2
1600 - 3500	3

Optional extra to have no lugs. This needs specifying at the time of ordering for floor standing only.

Working pressure:  
Tested to withstand 4.0 bar



For technical and installation  
information visit our website  
[www.henrad.co.uk/downloads](http://www.henrad.co.uk/downloads)





# Verona Slimline

The practical design of the Verona Slimline radiator is ideally suited to smaller spaces to deliver maximum heat output.

Prices  
exclude  
VAT

## Verona Slimline

Height mm	Length mm	Top Centres	Henrad Code	Heat emissions		Henrad Price
				Watts	Btu/hr	
1800	320	320	248300	872	2976	£254.26
	440	440	248301	1199	4092	£317.82
	520	520	248302	1417	4836	£381.39
	640	640	248303	1744	5952	£444.95
2000	320	320	248304	978	3338	£298.75
	440	440	248305	1344	4587	£362.32
	520	520	248306	1589	5423	£425.88
	640	640	248307	1956	6676	£489.45

Btu/hr @  $\Delta t50^{\circ}\text{C}$

Working pressure:  
Tested to withstand 4.6 bar



For technical and installation  
information visit our website  
[www.henrad.co.uk/downloads](http://www.henrad.co.uk/downloads)



# Column Range



Have you considered  
**Column Concept?**

The most modern execution of a traditional concept, this classic style brings innovation and reliability to a high performance design.

Vertical and horizontal options offer a modern alternative to a traditional panel radiator, and will enhance both contemporary and traditional settings.

Prices exclude VAT

## Column 2

Height mm	Length mm	Henrad Code	Heat emissions Watts	Btu/hr	Henrad Price
500	628	263012	499	1703	£152.55
	858	263013	691	2358	£208.42
	1042	263014	845	2884	£253.12
	1272	263015	1037	3539	£308.99
600	628	263028	589	2010	£165.27
	858	263029	815	2782	£209.76
	1042	263030	997	3403	£254.26
	1272	263031	1223	4174	£330.54

Btu/hr @  $\Delta t50^{\circ}\text{C}$

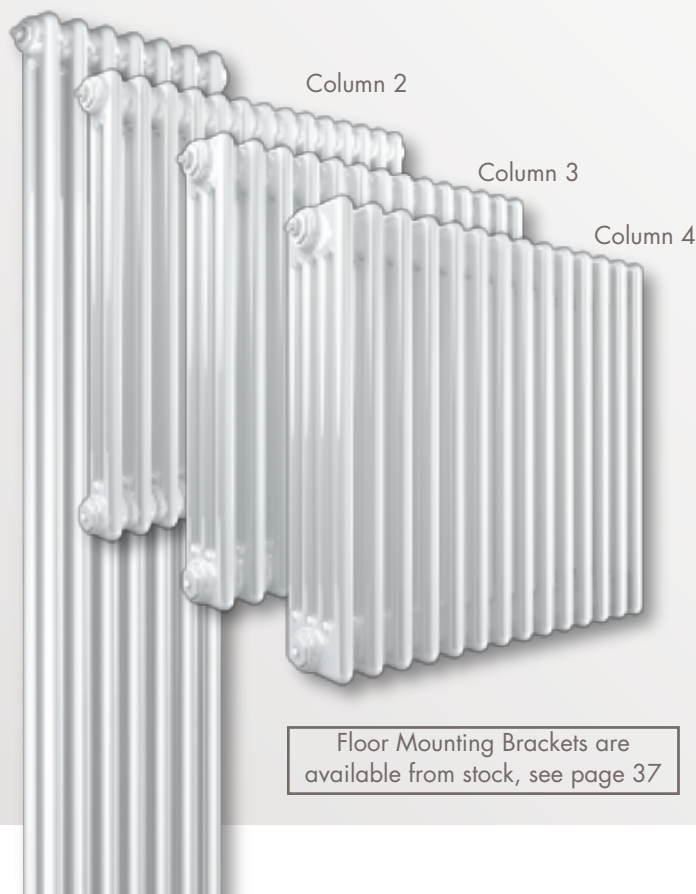
## Column 2 Vertical

Height mm	Length mm	Henrad Code	Heat emissions Watts	Btu/hr	Henrad Price
1800	352	263054	868	2962	£203.41
	444	263055	1116	3809	£266.98
2000	352	263056	1197	4084	£209.76
	444	263057	1242	4239	£273.33

Btu/hr @  $\Delta t50^{\circ}\text{C}$

Due to production tolerances, the length of the product and therefore the tap centres could contain a variation of +/- 1.5% of the overall stated length.

Column 2 Vertical



Floor Mounting Brackets are available from stock, see page 37

## Column 3

Height mm	Length mm	Henrad Code	Heat emissions Watts	Btu/hr	Henrad Price
300	858	263002	576	1966	£223.63
	1042	263003	704	2403	£263.08
	1272	263004	864	2949	£319.10
500	444	263016	464	1583	£165.27
	628	263017	671	2290	£195.97
	858	263018	929	3171	£216.12
	1042	263019	1135	3874	£286.05
	1272	263020	1393	4754	£368.67
	1456	263021	1600	5459	£394.11
	1870	263022	2064	7044	£495.80
600	444	263032	548	1870	£177.98
	628	263033	792	2703	£203.41
	858	263034	1096	3741	£235.19
	1042	263035	1340	4573	£292.40
	1272	263036	1644	5611	£375.04
	1456	263037	1888	6444	£406.81
750	1870	263038	2436	8314	£521.24
	858	263044	1337	4563	£292.40
	1042	263045	1635	5580	£343.25
	1272	263046	2006	6844	£444.95
	1456	263047	2303	7858	£521.24

Btu/hr @  $\Delta t50^{\circ}\text{C}$

## Column 4

Height mm	Length mm	Henrad Code	Heat emissions Watts	Btu/hr	Henrad Price
500	858	263025	1217	4152	£266.98
	1042	263026	1487	5074	£330.54
	1272	263027	1825	6227	£400.46
600	628	263040	1037	3538	£216.12
	858	263041	1436	4900	£266.98
	1042	263042	1756	5991	£330.54
750	1272	263043	2155	7353	£400.46
	628	263050	1266	4320	£254.26
	858	263051	1753	5981	£330.54
	1042	263052	2143	7312	£394.11
	1272	263053	2630	8974	£495.80

Btu/hr @  $\Delta t50^{\circ}\text{C}$

Working pressure:  
Tested to withstand 8.0 bar



For technical and installation information visit our website  
[www.henrad.co.uk/downloads](http://www.henrad.co.uk/downloads)





# Column Concept





A new take on a timeless classic, Column Concept will add a touch of class to any room.

Available in Slate grey and in a range of popular sizes to suit most homes.

Prices exclude VAT

Henrad Column Concept in RAL A7015 Slate grey available from stock.

### Column Concept 4



### Column Concept 3

Height mm	Length mm	Henrad Code	Heat emissions		Henrad Price
			Watts	Btu/hr	
600	628	263133	792	2703	£310.91
	858	263134	1096	3741	£342.69
	1042	263135	1340	4573	£399.90
	1272	263136	1644	5611	£482.54

Btu/hr @  $\Delta t50^{\circ}\text{C}$

### Column Concept 4

Height mm	Length mm	Henrad Code	Heat emissions		Henrad Price
			Watts	Btu/hr	
600	628	263140	1037	3538	£323.62
	858	263141	1436	4900	£374.48
	1042	263142	1756	5991	£438.04
	1272	263143	2155	7353	£507.96

Btu/hr @  $\Delta t50^{\circ}\text{C}$

Working pressure:  
Tested to withstand 8.0 bar



For technical and installation information visit our website  
[www.henrad.co.uk/downloads](http://www.henrad.co.uk/downloads)



Available only in RAL A7015 Slate grey.

Floor Mounting Brackets are available from stock, see page 37

# Everest Line



With its flat front panel featuring pleasing horizontal lines the Everest Line radiator offers contemporary good looks, adding a new dimension to any room.

Prices  
exclude  
VAT

Everest Line Type 11



Working pressure:  
Tested to withstand 8.0 bar



For technical and installation  
information visit our website  
[www.henrad.co.uk/downloads](http://www.henrad.co.uk/downloads)



Everest Line Type 22



Have you considered  
**Plan?**

## Everest Line Single Convector Type 11

Height mm	Length mm	Henrad Code	Heat emissions		Henrad Price
			Watts	Btu/hr	
300	500	3031105	235	802	£77.66
	1000	3031110	469	1601	£112.45
	1500	3031115	704	2401	£155.95
500	400	3051104	298	1017	£81.00
	600	3051106	448	1530	£89.68
	800	3051108	598	2040	£107.10
	1000	3051110	746	2545	£124.50
	1200	3051112	897	3060	£141.90
	1400	3051114	1046	3570	£159.30
	1600	3051116	1194	4075	£176.70
600	1800	3051118	1343	4584	£194.10
	400	3061104	348	1188	£84.35
	600	3061106	522	1782	£101.74
	800	3061108	696	2375	£119.14
	1000	3061110	870	2969	£136.55
	1200	3061112	1044	3563	£153.95
	1400	3061114	1219	4158	£171.34
	1600	3061116	1392	4751	£188.75
1800	3061118	1566	5345	£206.15	
2000	3061120	1741	5939	£223.54	

Btu/hr @  $\Delta t50^{\circ}\text{C}$

## Everest Line Double Convector Type 22

Height mm	Length mm	Henrad Code	Heat emissions		Henrad Price
			Watts	Btu/hr	
300	500	3032205	465	1587	£105.11
	1000	3032210	929	3171	£148.61
	1500	3032215	1394	4756	£192.11
500	400	3052204	555	1894	£120.48
	600	3052206	833	2843	£137.89
	800	3052208	1110	3788	£155.29
	1000	3052210	1388	4737	£172.69
	1200	3052212	1666	5686	£190.09
	1400	3052214	1943	6631	£207.49
	1600	3052216	2222	7580	£224.89
600	1800	3052218	2499	8526	£242.28
	400	3062204	640	2184	£132.53
	600	3062206	961	3280	£149.93
	800	3062208	1281	4372	£167.34
	1000	3062210	1601	5464	£184.74
	1200	3062212	1921	6556	£202.13
	1400	3062214	2241	7649	£219.55
	1600	3062216	2563	8744	£236.95
1800	3062218	2883	9836	£254.34	
2000	3062220	3203	10928	£271.74	

Btu/hr @  $\Delta t50^{\circ}\text{C}$



# Everest Line Concept





With its flat front panel featuring pleasing horizontal lines the Everest Line radiator offers contemporary good looks, adding a new dimension to any room.

Now available from stock in slate grey and in a range of popular sizes to suit most homes.

Prices  
exclude  
VAT

Everest Line Concept in RAL A7015 Slate grey available from stock.

Everest Line Concept Type 11



## Everest Line Concept

Single Convector Type 11

Height mm	Length mm	Henrad Code	Heat emissions		Henrad Price
			Watts	Btu/hr	
600	400	3261104	348	1187	£137.00
	600	3261106	522	1781	£154.39
	800	3261108	696	2375	£171.79
	1000	3261110	870	2968	£189.20
	1200	3261112	1044	3562	£206.60
	1400	3261114	1218	4156	£223.99

Btu/hr @  $\Delta t50^{\circ}\text{C}$

## Everest Line Concept

Double Convector Type 22

Height mm	Length mm	Henrad Code	Heat emissions		Henrad Price
			Watts	Btu/hr	
600	400	3262204	640	2184	£185.18
	600	3262206	961	3279	£202.58
	800	3262208	1281	4371	£219.99
	1000	3262210	1601	5463	£237.39
	1200	3262212	1921	6554	£254.78
	1400	3262214	2241	7646	£272.20

Btu/hr @  $\Delta t50^{\circ}\text{C}$

Working pressure:  
Tested to withstand 8.0 bar



For technical and installation  
information visit our website  
[www.henrad.co.uk/downloads](http://www.henrad.co.uk/downloads)



Available only in RAL A7015 Slate grey.

# Plan



Simplicity itself, the Plan range features a smooth, flat front panel with integrated top grille and side panels, providing a minimalistic, slimline, sleek and

modern appearance. Available in a range of sizes the Plan provides an instant level of sophistication to any room.

Plan Type 11



Working pressure:  
Tested to withstand 8.0 bar



For technical and installation  
information visit our website  
[www.henrad.co.uk/downloads](http://www.henrad.co.uk/downloads)



Plan Type 22



Have you considered  
**Verona?**

## Plan Single Convector Type 11

Height mm	Length mm	Henrad Code	Heat emissions		List Price
			Watts	Btu/hr	
300	500	4031105	235	802	£95.04
	1000	4031110	469	1601	£148.58
	1500	4031115	704	2401	£202.12
500	400	4051104	298	1017	£111.11
	600	4051106	448	1530	£132.53
	800	4051108	597	2040	£153.95
	1000	4051110	746	2545	£175.37
	1200	4051112	895	3060	£196.78
	1400	4051114	1044	3570	£218.20
	1600	4051116	1194	4075	£239.62
600	1800	4051118	1343	4584	£261.04
	400	4061104	348	1188	£124.50
	600	4061106	522	1782	£145.91
	800	4061108	696	2375	£167.34
	1000	4061110	870	2969	£188.76
	1200	4061112	1044	3563	£210.18
	1400	4061114	1218	4158	£231.59
	1600	4061116	1392	4751	£253.00
	1800	4061118	1566	5345	£274.42
	2000	4061120	1741	5939	£295.84

Btu/hr @  $\Delta t50^{\circ}\text{C}$

## Plan Double Convector Type 22

Height mm	Length mm	Henrad Code	Heat emissions		List Price
			Watts	Btu/hr	
300	500	4032205	465	1587	£151.30
	1000	4032210	929	3171	£204.84
	1500	4032215	1394	4756	£258.39
500	400	4052204	555	1894	£170.01
	600	4052206	833	2843	£191.42
	800	4052208	1110	3788	£212.84
	1000	4052210	1388	4737	£234.27
	1200	4052212	1666	5686	£255.69
	1400	4052214	1943	6631	£277.11
	1600	4052216	2222	7580	£298.53
600	1800	4052218	2499	8526	£319.94
	400	4062204	640	2184	£184.74
	600	4062206	961	3280	£206.16
	800	4062208	1281	4372	£227.57
	1000	4062210	1601	5464	£248.99
	1200	4062212	1921	6556	£270.42
	1400	4062214	2241	7649	£291.84
	1600	4062216	2563	8744	£313.25
	1800	4062218	2883	9836	£334.66
	2000	4062220	3203	10928	£356.08

Btu/hr @  $\Delta t50^{\circ}\text{C}$



# Plan Concept



Simplicity itself, the Plan range features a smooth, flat front panel with integrated top grille and side panels.

Now available from stock in slate grey and in a range of popular sizes to suit most homes.

Prices exclude VAT

Plan Concept in RAL A7015 Slate grey available from stock.

Plan Type 11



## Plan Concept

Single Convector Type 11

Height mm	Length mm	Henrad Code	Heat emissions		Henrad Price
			Watts	Btu/hr	
600	400	4251104	348	1187	£177.15
	600	4251106	522	1781	£198.56
	800	4251108	696	2375	£219.99
	1000	4251110	870	2968	£241.41
	1200	4251112	1044	3562	£262.83
	1400	4251114	1218	4156	£284.24

Btu/hr @  $\Delta t 50^{\circ}\text{C}$

## Plan Concept

Double Convector Type 22

Height mm	Length mm	Henrad Code	Heat emissions		Henrad Price
			Watts	Btu/hr	
600	400	4252204	640	2184	£237.39
	600	4252206	961	3279	£258.81
	800	4252208	1281	4371	£280.22
	1000	4252210	1601	5463	£301.64
	1200	4252212	1921	6554	£323.07
	1400	4252214	2241	7646	£344.49

Btu/hr @  $\Delta t 50^{\circ}\text{C}$

Working pressure:  
Tested to withstand 8.0 bar



For technical and installation information visit our website  
[www.henrad.co.uk/downloads](http://www.henrad.co.uk/downloads)



Available only in RAL A7015 Slate grey.

# NEW Plan Vertical





With an exceptionally slim profile and silky-smooth surface, the Henrad Plan Vertical offers a stylish alternative for domestic or commercial developments.

Prices  
exclude  
VAT

Plan Type 22



## NEW Plan Vertical

Double Convector Type 22

Height mm	Length mm	Henrad Code	Heat emissions		Henrad Price
			Watts	Btu/hr	
<b>1800</b>	400	4182204	1476	5036	£491.57
	500	4182205	1845	6295	£534.31
	600	4182206	2214	7554	£628.35
<b>2000</b>	400	4202204	1588	5405	£573.49
	500	4202205	1980	6756	£623.37
	600	4202206	2376	8107	£733.08

Btu/hr @  $\Delta t50^{\circ}\text{C}$

Working pressure:  
Tested to withstand 8.0 bar

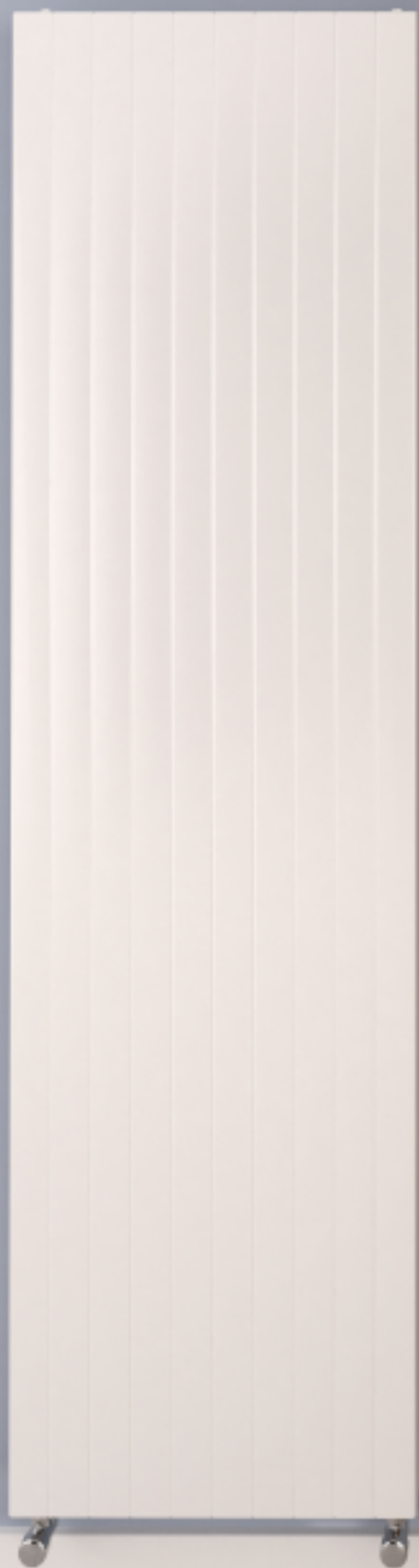


For technical and installation  
information visit our website  
[www.henrad.co.uk/downloads](http://www.henrad.co.uk/downloads)



Centre Tap TRV is now available, see page 37

# Alto Line



The Alto Line radiator incorporates all the features of the Everest Line but with a vertical line design.

Prices exclude VAT

Alto Line



## Alto Line

Double Convector Type 22

Height mm	Length mm	Henrad Code	Heat emissions		Henrad Price
			Watts	Btu/hr	
<b>1600</b>	300	3162203	1026	3501	£342.71
	500	3162205	1710	5835	£360.10
<b>1800</b>	400	3182204	1476	5036	£347.30
	500	3182205	1845	6295	£377.50
	600	3182206	2214	7554	£443.94
<b>2000</b>	400	3202204	1588	5405	£405.18
	500	3202205	1980	6756	£440.42
	600	3202206	2376	8107	£517.93

Btu/hr @  $\Delta t 50^{\circ}\text{C}$

Working pressure:  
Tested to withstand 8.0 bar



For technical and installation information visit our website  
[www.henrad.co.uk/downloads](http://www.henrad.co.uk/downloads)



Centre Tap TRV is now available, see page 37



# Compact

With a slim profile and smooth, white finish, Compact radiators will blend into any room in the house, to provide guaranteed heating performance.



## Compact

Single Convector Type 11 & Type 21  
Double Convector Type 22

Working pressure:  
Tested to withstand 10.0 bar

Have you considered  
Everest Line?

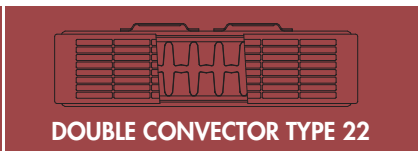
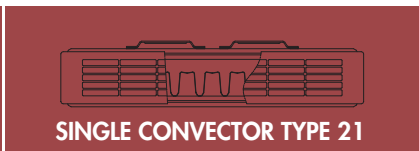


Type 11

Type 21

Type 22

For technical and installation information visit our website [www.henrad.co.uk/downloads](http://www.henrad.co.uk/downloads)



Height mm	Length mm	SINGLE CONVECTOR TYPE 11				SINGLE CONVECTOR TYPE 21				DOUBLE CONVECTOR TYPE 22			
		Henrad Code	Heat emissions Watts	Btu/hr	Henrad Price	Henrad Code	Heat emissions Watts	Btu/hr	Henrad Price	Henrad Code	Heat emissions Watts	Btu/hr	Henrad Price
<b>300</b>	500	2031105	255	868	£15.52	2032105	373	1271	£23.37	2032205	491	1675	£29.55
	1000	2031110	509	1737	£30.79	2032110	745	2542	£46.42	2032210	982	3351	£58.92
	1500	2031115	764	2605	£46.10	2032115	1118	3813	£69.49	2032215	1473	5026	£88.32
	1600	-	-	-	-	-	-	-	-	2032216	1571	5362	£117.81
	2000	2031120	1018	3473	£61.42	2032120	1490	5084	£92.56	2032220	1964	6701	£117.69
<b>450</b>	400	2011104	302	1032	£18.52	2012104	422	1440	£26.89	2012204	548	1871	£33.70
	500	2011105	378	1290	£23.08	2012105	528	1800	£33.54	2012205	686	2339	£42.11
	600	2011106	454	1548	£27.65	2012106	633	2160	£40.20	2012206	823	2807	£50.51
	700	2011107	529	1806	£32.25	2012107	739	2520	£46.87	2012207	960	3274	£58.92
	800	2011108	605	2064	£36.82	2012108	844	2880	£53.53	2012208	1097	3742	£67.32
	900	2011109	680	2322	£41.41	2012109	950	3240	£60.20	2012209	1234	4210	£75.71
	1000	2011110	756	2579	£46.02	2012110	1055	3600	£66.88	2012210	1371	4678	£84.12
	1100	2011111	832	2837	£50.59	2012111	1161	3960	£73.53	2012211	1508	5146	£92.53
	1200	2011112	907	3095	£55.19	2012112	1266	4320	£80.20	2012212	1645	5613	£100.92
	1400	2011114	1058	3611	£64.35	2012114	1477	5040	£93.53	2012214	1919	6549	£117.74
	1600	2011116	1210	4127	£73.53	2012116	1688	5759	£106.86	2012216	2194	7485	£134.54
	1800	2011118	1361	4643	£82.71	2012118	1899	6479	£120.18	2012218	2468	8420	£151.35
	2000	2011120	1512	5159	£91.90	2012120	2110	7199	£133.52	2012220	2742	9356	£168.16
	2200	2011122	1663	5675	£101.08	-	-	-	-	2012222	3016	10291	£184.98
2400	2011124	1814	6191	£110.26	-	-	-	-	2012224	3290	11227	£201.80	
<b>600</b>	300	2061103	294	1003	£25.45	-	-	-	-	-	-	-	-
	400	2061104	392	1338	£24.09	2062104	538	1836	£34.70	2062204	693	2364	£43.25
	500	2061105	490	1672	£30.06	2062105	673	2295	£43.31	2062205	866	2955	£54.05
	600	2061106	588	2006	£36.07	2062106	807	2753	£51.93	2062206	1039	3546	£64.85
	700	2061107	686	2341	£42.06	2062107	942	3212	£60.56	2062207	1212	4137	£75.66
	800	2061108	784	2675	£48.05	2062108	1076	3671	£69.16	2062208	1386	4728	£86.47
	900	2061109	882	3009	£54.05	2062109	1211	4130	£77.80	2062209	1559	5319	£97.26
	1000	2061110	980	3344	£60.05	2062110	1345	4589	£86.42	2062210	1732	5910	£108.07
	1100	2061111	1078	3678	£66.07	2062111	1480	5048	£95.04	2062211	1905	6501	£118.87
	1200	2061112	1176	4013	£72.05	2062112	1614	5507	£103.68	2062212	2078	7092	£129.69
	1400	2061114	1372	4681	£84.04	2062114	1883	6425	£120.93	2062214	2425	8273	£151.30
	1600	2061116	1568	5350	£96.04	2062116	2152	7343	£138.16	2062216	2771	9455	£172.91
	1800	2061118	1764	6019	£108.05	2062118	2421	8260	£155.42	2062218	3118	10637	£194.52
	2000	2061120	1960	6688	£120.04	2062120	2690	9178	£172.67	2062220	3464	11819	£214.93
2200	2061122	2156	7356	£132.05	-	-	-	-	2062222	3810	13001	£237.75	
2400	2061124	2352	8025	£144.04	-	-	-	-	2062224	4157	14183	£259.36	
<b>700</b>	400	2071104	447	1527	£27.62	2072104	612	2088	£39.72	2072204	784	2676	£49.40
	500	2071105	559	1906	£34.50	2072105	765	2610	£49.61	2072205	981	3345	£61.75
	600	2071106	670	2287	£41.38	2072106	918	3132	£59.49	2072206	1177	4015	£74.11
	700	2071107	782	2668	£48.27	2072107	1071	3654	£69.39	2072207	1373	4684	£86.47
	800	2071108	894	3049	£55.18	2072108	1224	4176	£79.28	2072208	1569	5353	£98.82
	900	2071109	1005	3430	£62.05	2072109	1377	4698	£89.16	2072209	1765	6022	£111.18
	1000	2071110	1117	3811	£68.94	2072110	1530	5220	£99.05	2072210	1961	6691	£123.53
	1100	2071111	1229	4192	£75.82	2072111	1683	5742	£108.94	2072211	2157	7360	£135.87
	1200	2071112	1340	4573	£82.71	2072112	1836	6264	£118.83	2072212	2353	8029	£148.24
	1400	2071114	1564	5336	£96.50	2072114	2142	7309	£138.60	2072214	2745	9367	£172.97
	1600	2071116	1787	6098	£110.28	2072116	2448	8353	£158.37	2072216	3138	10705	£197.66
	1800	2071118	2011	6860	£124.05	2072118	2754	9397	£178.18	2072218	3530	12044	£222.37
	2000	2071120	2234	7622	£137.84	2072120	3060	10441	£197.95	2072220	3922	13382	£247.10
	2600	2071126	2904	9908	£179.26	-	-	-	-	-	-	-	-



**NEW** Compact K3

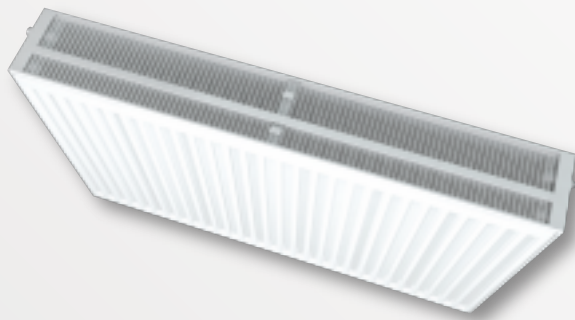




The Compact K3 is the ideal choice for low energy systems, providing outstanding heat output from a smaller footprint.

Prices  
exclude  
VAT

Compact K3



## NEW Compact K3

Triple Convettor Type 33

Height mm	Length mm	Henrad Code	Heat emissions		Henrad Price
			Watts	Btu/hr	
600	400	2063304	956	3262	£137.00
	500	2063305	1195	4077	£159.00
	600	2063306	1433	4889	£176.00
	700	2063307	1672	5705	£192.00
	800	2063308	1911	6520	£203.00
	900	2063309	2150	7336	£220.00
	1000	2063310	2389	8151	£234.00
	1100	2063311	2628	8967	£258.00
	1200	2063312	2867	9782	£282.00
	1400	2063314	3345	11413	£363.00

Btu/hr @  $\Delta t50^{\circ}\text{C}$

Working pressure:  
Tested to withstand 8.0 bar



For technical and installation  
information visit our website  
[www.henrad.co.uk/downloads](http://www.henrad.co.uk/downloads)



# LST Standard



The LST Standard has been specifically designed to meet the highest standards for low surface temperature radiators.

The range meets the NHS guidance for 'safe hot water and surface temperature'. All radiators are finished with an anti-bacterial paint as standard.

Prices exclude VAT

LST Standard



## LST Standard Type 11

Casing Height mm	Casing Length mm	Henrad Code	Heat emissions Watts	Btu/hr	Henrad Price
500	560	145400	196	669	£222.48
	560	145424	290	989	£236.46
650	760	145425	435	1484	£300.02
	960	145426	580	1979	£327.99
	1160	145427	725	2474	£358.50
	1360	145428	870	2968	£382.66

Btu/hr @  $\Delta t50^{\circ}\text{C}$

## LST Standard Type 22

Casing Height mm	Casing Length mm	Henrad Code	Heat emissions Watts	Btu/hr	Henrad Price
500	560	145416	348	1187	£236.46
	760	145417	522	1781	£282.23
	1160	145419	870	2968	£382.66
650	560	145440	478	1631	£287.32
	760	145441	717	2446	£329.26
	960	145442	956	3262	£422.07
	1160	145443	1195	4077	£490.72
	1360	145444	1434	4893	£561.91
	1560	145445	1673	5708	£668.70
	1760	145446	1912	6524	£739.89
	1960	145447	2151	7341	£813.62
800	760	145465	922	3146	£386.47
	960	145466	1230	4197	£512.33
	1160	145467	1537	5244	£621.66
	1360	145468	1844	6295	£703.03
	1560	145469	2152	7343	£803.46
	1760	145470	2459	8393	£891.18
	1960	145471	2767	9441	£1006.87

Btu/hr @  $\Delta t50^{\circ}\text{C}$

- LST Standard gives you the option to specify controls.
- LST Standard has the option to reverse the attractive outer casing to suit the pipe layout.
- For peace of mind the paint finish is anti-bacterial.
- The LST Standard comes complete with all components required in one easy package.
- The internal emitter generates excellent heat outputs through convection.
- Tested to high standards, the emitter has a maximum working pressure of 116psi (8.0 bar) and conforms to BS EN 442.

Working pressure:  
Tested to withstand 8.0 bar



For technical and installation information visit our website [www.henrad.co.uk/downloads](http://www.henrad.co.uk/downloads)

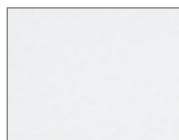


# Colour Range

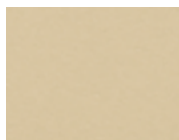
## Natural Colour



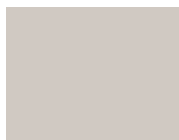
NT110  
Papyrus white  
510110



NT120  
Pearl white  
510120



NT130  
Champagne  
510130



NT140  
Beige  
510140



NT150  
Beige grey  
510150



NT160  
Pebble grey  
510160



NT170  
Quartz grey  
510170



SN110  
Cream white  
530110



SN120  
Cream  
530120



SN130  
Mocca  
530130



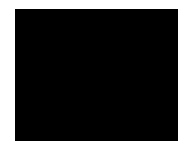
SN140  
Bordeaux  
530140



SN150  
Sepia  
530150



SN160  
Pale blue  
530160



SN170  
Black  
530170

## Metallic Colour



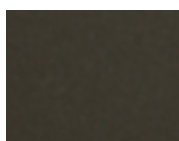
ML110  
Dove grey  
520110



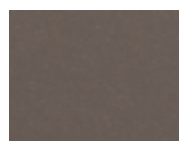
ML120  
Titanium grey  
520120



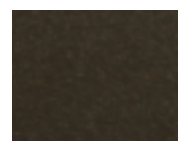
ML130  
Blue grey  
520130



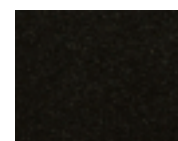
ML140  
Granite  
520140



ML150  
Cappuccino  
520150



ML160  
Terra brown  
520160



ML170  
Graphite black  
520170

## RAL Colour



A1004  
Golden yellow  
541004



A2003  
Pastel orange  
542003



A3002  
Carmine red  
543002



A3003  
Robin red  
543003



A5002  
Ultramarine blue  
545002



A6018  
Yellow green  
546018



A7001  
Silver grey  
547001



A7011  
Iron grey  
547011



A7016  
Anthracite grey  
547016



A7030  
Stone grey  
547030



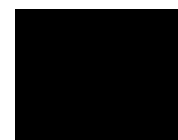
A7035  
Light grey  
547035



A8017  
Chocolate brown  
548017



A9003  
Signal white  
549003



A9005  
Jet black  
549005



A9016  
Traffic white



A7015  
Slate grey  
\*Available for Column  
Concept, Everest Line  
Concept & Plan Concept

The colours shown throughout the brochure are reproduced as accurately as this process will allow and can be made to order on the identified products.

Please Note: Colour options are available in the Arno Towel Rail Range and Verona Towel Rail only. Price of coloured radiators are available on request. When a coloured radiator has been ordered it cannot be cancelled or returned. All coloured radiators have up to an 8 week lead time from date of order.



Colour illustrated  
Pale blue RAL SN160



Colour illustrated  
Champagne RAL NT130



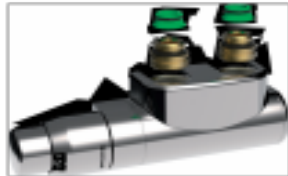
Colour illustrated  
Iron grey RAL A7011

# Accessories

## Centre Tap TRV

---

Available from stock



UIN	Henrad Description	Henrad Price
145313	Centre TRV Set Straight White	£52.65
145314	Centre TRV Set Straight Chrome	£52.65
145315	Centre TRV Set Angled L White	£52.65
145316	Centre TRV Set Angled L Chrome	£52.65
145317	Centre TRV Set Angled R White	£52.65
145318	Centre TRV Set Angled R Chrome	£52.65

## Column Floor mounting brackets

---

Available from stock

UIN 148137

(sold in pairs)

A9016

Traffic white



## Column Floor mounting brackets

---

Available from stock

UIN 148139

(sold in pairs)




A7015

Slate grey





# Glossary

- Btu/hr** British Thermal Unit per hour is the standard measurement used to state the amount of output of any heat generating device.
- Watts** Is another measurement for heat output, 1 watt is equivalent to 3.412 Btu/hr.
- Type 11** Also known as Type K1, is a type of radiator with 1 radiator panel and 1 set of convection fins.
- Type 21** Also known as Type P+, is a type of radiator with 2 radiator panels and 1 set of convection fins.
- Type 22** Also known as Type K2, is a type of radiator with 2 radiator panels and 2 sets of convection fins.
- $\Delta t$**  Refers to the difference in temperature between the water circulating in the central heating system and that of the ambient temperature. It is important to use the correct  $\Delta t$  when selecting your radiators, as the same radiator will have different outputs at different water temperatures.
- $\Delta t50$**   $\Delta t50$  is the UK standard, however Henrad also quote at lower levels for lower water temperature systems.
- Heat loss** Is the amount of heat a room loses, it is therefore an important calculation when determining what size radiator is required to heat a room to the correct level.
- Warranty** The warranty covers any defect that is attributable to a manufacturing, assembly or material fault, further details available on request.
-  Is a set of International regulations related to quality management systems.
- TBOE / BOE** Refers to which position the pipes are connected to the radiator, OE means opposite end i.e. 1 pipe on each side, TB is top bottom i.e. 1 pipe is connected to the top and 1 to the bottom, B is both pipes connected to the bottom.
-  EN 442 is the European standard which defines the manufacturing standards for radiators and convectors which operate at temperatures of less than 120°C. The standard defines the type of steel which must be used, the type of pressure testing which must be carried out and the accuracy of the heat outputs quoted in the literature.
- RAL** A European wide colour matching system.
- BSP** British Standard Piping.
-  The CE marking is the manufacturers declaration that the product meets the requirements of the applicable EC directive. This is applicable to all Henrad products.
-  The Manufacturers' Association of Radiators and Convectors.

# |||| HENRAD

STELRAD RADIATOR GROUP



Henrad (UK) Limited, Marriott Road, Mexborough, South Yorkshire S64 8BN.  
Telephone: 0844 543 6200 Facsimile: 0844 543 6300

[www.henrad.co.uk](http://www.henrad.co.uk)

UIN 208863  
HPR/10K/0119